



# WHAT'S ON THE INSIDE MATTERS

April 2026

## GROWTH IN ALL THE RIGHT PLACES



**RON JEZERINAC, PE, SE**  
President  
rjezerinac@jezerinacgroup.com



If you've been around the JG team for a while, you know we've got incredible momentum going right now, and we're focused on keeping it that way!

At Jezerinac Group, we're continuing to build on a strong foundation while being really intentional about what's next. The work is evolving, bringing the right opportunities for growth across both our projects and our internal team, and our people continue to step up in all the ways that matter. There's a steady energy across the board, and it's the kind that comes from doing the right work with the right people; our clients, partners, and staff alike.

We've had the chance to be part of some meaningful projects lately, alongside clients who trust us to think beyond the drawings and bring real value to the table. That trust means a lot, and it pushes us to stay sharp, communicate clearly, and deliver work we're proud to stand behind.

Internally, we're continuing to invest in our team. We've welcomed new faces, created opportunities for professional and personal growth, and kept a strong focus on collaboration. It's not about getting bigger just to say we did. It's about building a group of people who work well together, challenge each other, and genuinely enjoy what they're doing. That's where the best results come from. And it's showing.

We're also taking a thoughtful approach to how we grow, making sure we're pursuing the right projects and setting our teams up for success from the start. It's helping us stay agile, keep quality high, and maintain the level of service our clients expect.

We appreciate the continued support from our clients, partners, and team. There's a lot to be excited about right now, and even more ahead. We're looking forward to what's next!

# RMJ

### CONTENTS

President's Letter

News

**Project Spotlight:**  
**Roger Dean Stadium Improvements**

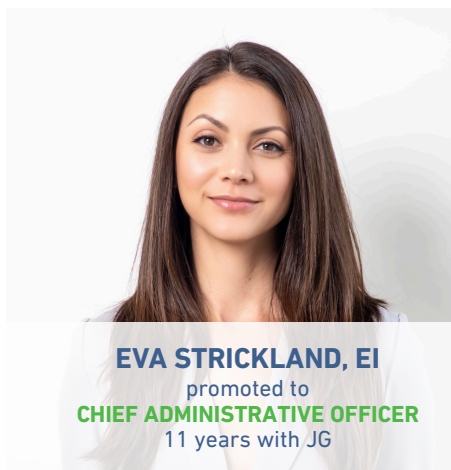
**The Scoop:**  
**2025 Bangkok Skyscraper Collapse**

**The Scoop:**  
**Built on Trust, Backed by Action.**



## PROMOTIONS!

Big successes deserve a big shoutout! These promotions reflect your continued dedication, excellence, and commitment to your work, your teammates, and our clients. We are incredibly grateful for the energy, leadership, and heart you bring to the firm every day.



**EVA STRICKLAND, EI**  
promoted to  
**CHIEF ADMINISTRATIVE OFFICER**  
11 years with JG



**MATT BAKER, PE, SE**  
promoted to  
**PROJECT MANAGER**  
1+ years with JG



**CARL NEHME, PE**  
promoted to  
**ASSISTANT PROJECT MANAGER**  
4 years with JG



**DEANNA CRAIG, EI**  
promoted to  
**ASSISTANT PROJECT MANAGER**  
3+ years with JG



**DAVID HALLE, EI**  
promoted to  
**DESIGN ENGINEER II**  
2+ years with JG

## WELCOME TO THE TEAM!

Jezerinac Group keeps growing, and we're having a lot of fun doing it! We've added some incredibly talented people, who not only strengthen our technical capabilities, but also bring great energy to our culture.

We're excited to welcome our newest team members and can't wait to see the impact they'll make as we keep building something great together.

### WELCOME

- Thays Guerra Araujo Duarte
- Matheus Reis
- Saul Licon, PE
- Anthony El-Jalkh
- Joe Sagara
- Charles Kissel
- Benjamin Kogan
- Lilya Melnikova, PE

# NEWS



## RECENT WINS!

Jezerinac Group is proud to celebrate recent project wins. Notable highlights include:



**School District Palm Beach County  
North Technical Prep Academy**  
Subconsultant to Song + Associates



**City of Cape Coral**  
**Community Recreation & Disaster Shelter**  
Subconsultant to OLC



**Lee County**  
**Continuing Structural Engineering Services**  
Prime Contract



**Palm Beach County**  
**Peanut Island Park Improvements**  
Subconsultant to REG Architects



**Transportation Facility**  
**Belvedere/Skees Rd**  
Subconsultant to REG Architects



**Village of Palm Springs**  
**Public Safety Building Expansion**  
Subconsultant to Song + Associates



**Conservancy of  
Southwest Florida**  
Subconsultant to Parker Mudgett Smith



**Hard Rock Stadium**  
**Broadcast Suite Expansion**  
Subconsultant to Dunlap Bowers LLC



**Palm Beach County**  
**Convention Center Expansion**  
Subconsultant to TVS



**School District of Palm Beach County**  
**North Technical Prep Academy**  
Subconsultant to Song + Associates



**Broward County**  
**Copans Road Transit Facility**  
Subconsultant to Arcadis



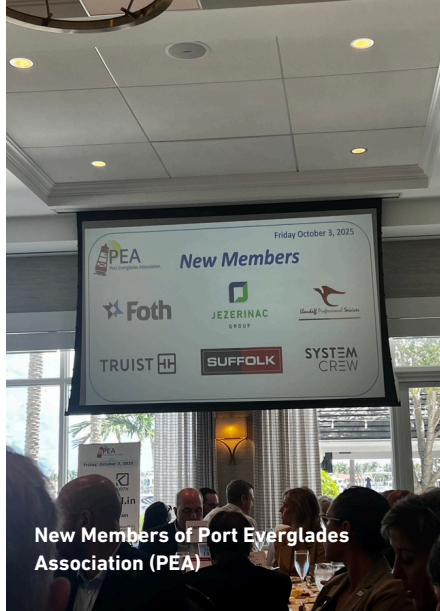
**Bravo Supermarket**  
**Bonita Springs**  
Subconsultant to MK Architecture



## OUT AND ABOUT!



USF Football Stadium and Training Facility Site Visit



New Members of Port Everglades Association (PEA)



PEA Luncheon with special guest, Bonni Furt, TSF Geo



Team Luncheon



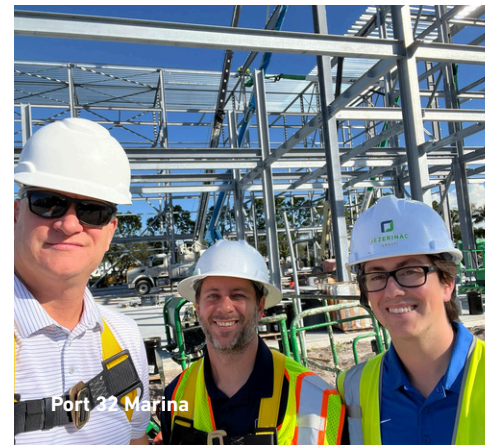
Georgia Institute of Technology Career Fair



NYU Langone Topping Out



JG Holiday Party



Port 22 Marina

# PROJECT SPOTLIGHT



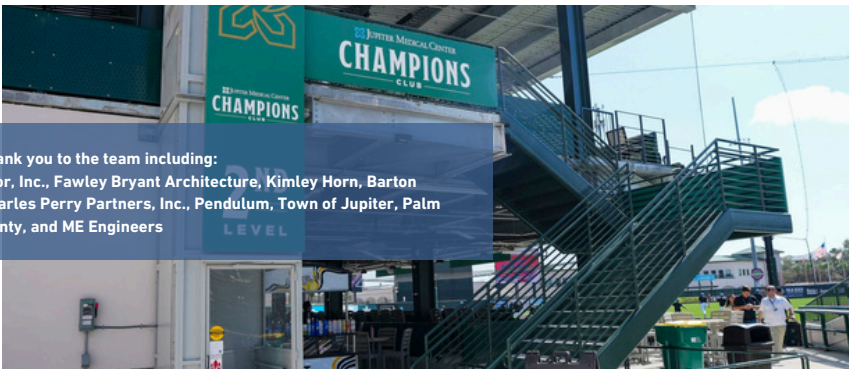
## ROGER DEAN STADIUM

Nothing says “spring is here” like the crack of a bat and the roar of the crowd! To kick off baseball season, we’re spotlighting one of our favorite sports projects: Roger Dean Chevrolet Stadium!

Jezerinac Group provided threshold and special inspection services for the \$108M renovation of the 6,800-seat facility in Jupiter, Florida. Upgrades include expanded clubhouses for the Cardinals and Marlins, new turf fields, state-of-the-art weight rooms, upgraded LED lighting, and enhanced fan amenities such as a larger team store and refreshed seating.

Our work covered inspection of structural systems and building envelope components, including foundations, framing, masonry, structural steel, roofing, waterproofing, glazing, and exterior cladding assemblies providing code compliance and overall project quality.

It’s thrilling to see the stadium buzzing with fans again, knowing we played a role in keeping it safe, functional, and ready for the season.



Special thank you to the team including:  
Marc Taylor, Inc., Fawley Bryant Architecture, Kimley Horn, Barton Malow, Charles Perry Partners, Inc., Pendulum, Town of Jupiter, Palm Beach County, and ME Engineers

## SERVICES WE PROVIDE

- Structural Design
- Post-Tensioned Concrete Design
- Light Gauge Steel Framing Design
- Demolition Consultation
- Owner’s Representation
- Property Loss Consulting
- Structural Investigation
- Litigation Support
- Expert Witness
- Milestone Inspections
- Building Information Modeling (BIM)
- Feasibility Study
- Peer Review
- Special Inspection
- Structural Condition Assessment
- Steel Connection Design
- Erection Engineering
- Temporary Stability Analysis
- Shoring and Re-Shoring Design

## MARKETS WE SERVE

-  SPORTS FACILITIES
-  AEROSPACE AVIATION
-  COMMERCIAL
-  EDUCATION
-  GOVERNMENT
-  HEALTHCARE
-  HOSPITALITY
-  INDUSTRIAL
-  MARINA
-  MIXED-USE
-  PARKING
-  RESIDENTIAL



CARL NEHME, PE  
Assistant Project Manager  
cnehme@jezerinacgroup.com



## 2025 BANGKOK SKYSCRAPER COLLAPSE

One earthquake. 95 lives lost. And an entire city stood firm, except one building.

On March 28, 2025, a Mw 7.7 earthquake struck Myanmar and sent tremors across Bangkok. Of the countless high-rises across the city, only one collapsed entirely.

The 33-story State Audit Office Tower, a government building under construction with its structure complete but interior work still ongoing, was completely destroyed in seconds.

Why did this building fall while everything around it survived? The answer is one structural engineer's have seen before.

### WHAT THE INVESTIGATION FOUND

According to papers published by investigators, they didn't find a freak of nature. They found a cascade of preventable failures:

- **Deficient Shear Walls:** RC walls around elevator shafts and stairwells, the primary lateral-force-resisting elements, were improperly designed. In a seismic event, these are the backbone of the structure. They failed.
- **Substandard Concrete:** Samples from the site did not meet required strength standards.
- **Substandard & Illegally Modified Steel:** Steel bars from a supplier that was later ordered to shut down in December 2024 were found in the structure. On top of that, bars were reportedly cut down to smaller sizes than specified in the approved structural plans.

### SOUND FAMILIAR?

If you've followed cases like Sampoong, Ronan Point, or the Hyatt Regency, the pattern is unmistakable:

- Unauthorized modifications compromising load paths.
- Warning signs present, but ignored.
- Responsibility diffused across designer, contractor, and supervisors.
- No redundancy to arrest progressive collapse.

95 people did not go home that day.

### LESSONS WE CANNOT AFFORD TO FORGET

- Shear wall design is not a detail, it's the load path. Lateral resistance must be robust, properly sized, detailed, and continuously inspected.
- Every plan revision carries structural consequences. Design changes must trigger a full re-evaluation of load paths, not just a geometry update.
- Material quality is non-negotiable. No engineering ingenuity compensates for substandard concrete or rebar. *Verify. Test. Document.*
- Accountability doesn't end at the contract boundary. In this case, designers, contractors, and supervisors all pointed fingers at each other. 23 individuals and entities were eventually charged. 95 people were already gone.
- Progressive collapse resistance saves lives. A building that fails at one floor and arrests the damage is a tragedy. A building that pancakes to the ground is a catastrophe. Design for the former.

Bangkok's skyline survived a major earthquake largely unscathed. One building didn't; and the reason wasn't the earthquake. It was the decisions made long before the ground started shaking.



**KRISTEN LAWLOR MAU**  
Chief Marketing Officer  
kmau@jezerinacgroup.com

## **BUILT ON TRUST. BACKED BY ACTION.**

Spring has sprung! Or more like we blinked twice and we're back in the upper 80's with even higher humidity. Well, the cool weather was fun while it lasted.

As we move further into the year, the pace across our industry shows no signs of stopping. Opportunities are evolving, competition is strong, and teams are being more intentional about how they pursue work and build partnerships. Here in Florida, the market is still holding strong and we continue to see steady momentum across both the public and private sectors.

Strong markets reward strong relationships. For us, business development is not about chasing everything. We are fortunate enough in our tenure as JG to make choices. It is about focusing on the right opportunities and working with partners who align with how we approach projects. We are not in it just for ourselves. We believe that when our clients and partners succeed, we succeed right alongside them, and that mindset continues to shape how we build and maintain our relationships.

At the same time, we are always looking to forge new connections. Building new relationships is just as important as strengthening existing ones, and we value the opportunity to meet new partners, understand their goals, and find ways to work together. If you know me, I am never one to shy away from a cold handshake.

A big part of our role as partners is being the eyes and ears for our clients. Being in the field every day gives us a real-time view of what is happening, and we take that responsibility seriously. Whether it is flagging issues early, keeping communication clear and consistent, or helping navigate challenges as they arise, our goal is to help teams stay ahead and keep projects moving forward, responsibly.

That approach only works when it is grounded in authenticity. Being straightforward, responsive, and transparent builds trust over time. It creates an environment where teams can communicate openly, solve problems early, and stay aligned from start to finish.

We are also seeing more collaboration across the board. Projects are becoming more complex, and the best outcomes are coming from teams that align early, understand each other's strengths, and work together with a shared approach.

From a marketing perspective, it reinforces something we have always believed: **Visibility matters, but credibility matters more.** It is not just about being seen. It is about being known for delivering, following through, and being a partner others trust.

We appreciate the opportunity to work alongside so many great teams and look forward to what we can build together in the months and years ahead. Even in the 95% South Florida humidity.





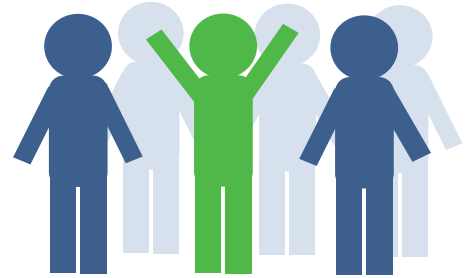
## NOW HIRING

*SEE WHAT'S ON THE INSIDE*

Jezerinac Group is growing and we're looking to add a few great people to the team! With work expanding across Florida, we're hiring engineers who are collaborative, detail-oriented, and take pride in what they do.

Opportunities are open in **West Palm Beach, Fort Myers, and Jacksonville**, along with select remote roles. If you or someone you know might be a fit, we'd love to connect!

Learn more at [jezerinacgroup.com/careers](http://jezerinacgroup.com/careers) or reach out to Lily at [ljezerinac@jezerinacgroup.com](mailto:ljezerinac@jezerinacgroup.com).



## HAVE YOU SEEN US ON LINKEDIN?

Follow Jezerinac Group on LinkedIn to stay updated on our latest projects, industry insights, and career opportunities.

Our LinkedIn page is a hub for sharing innovative structural engineering solutions, company news, and professional development resources. By connecting with us, you'll gain access to exclusive content at your fingertips, including case studies, project highlights, and hear directly from the team behind our projects.

Join our growing network of industry professionals, participate in meaningful discussions, and discover how Jezerinac Group is shaping the future of structural engineering.

SCAN ME



## SMALL AND CERTIFIED BUSINESS ENTERPRISE

- **Broward County**
- **Broward Health**
- **City of West Palm Beach**
- **Miami-Dade County**
- **Palm Beach County**
- **School District of Palm Beach County**